



# Model FP 025 plastic

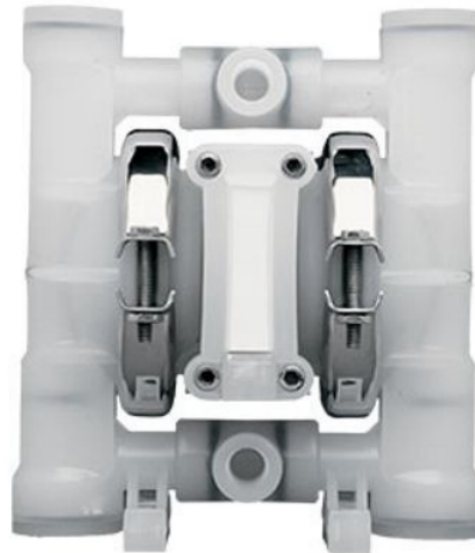
AIR OPERATED DOUBLE DIAPHRAGM PUMPS

## Specifications

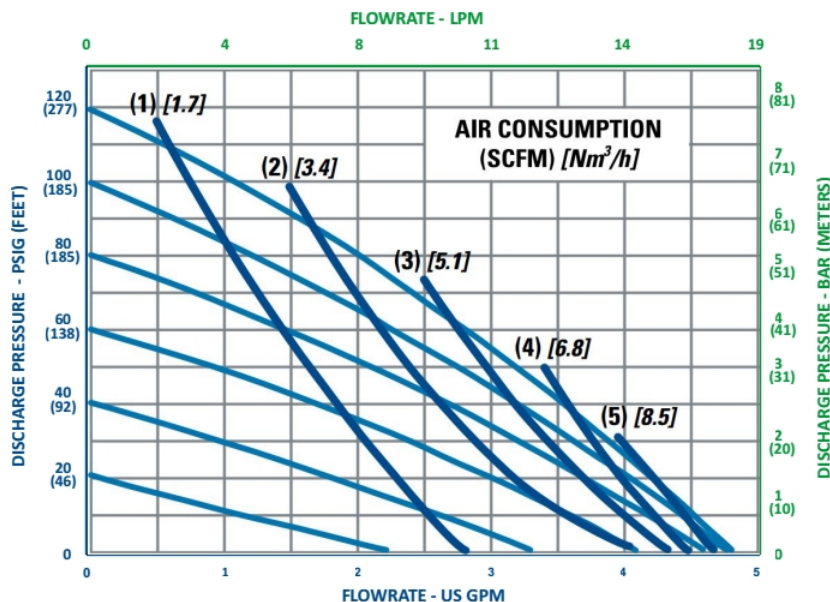
Suction & Discharge Size:	1/4"
Porting Location:	Center
Connection Types:	FNPT
Air Inlet:	1/8" FNPT
Porting Location:	Center
Exhaust port:	1/8"
Polypropylene Shipping Weight :	3 lbs. (1.4kg)
PVDF Shipping Weight :	3 lbs. (1.4kg)

## Capabilities

Maximum Flow Rate:	4.8 gpm (18.1 lpm)
Maximum Air Supply Pressure:	120 psi (8 bar)
Displacement Per Stroke:	0.004 gal (0.02 lit)
Minimum Air Inlet Pressure:	10 psig (0.7 bar)
Maximum Particle Size :	0.015 in (0.4 mm)
Operating temperature:	Determined by elastomers



## FP025 Performance



Note: Full stroke diaphragm allows performance to be equal for all elastomers.

## Typical Applications

- Acids & Bases
- Plating Solutions
- Wastewater
- Paints, Inks, Solvents
- Ceramic Slip and Glaze
- Lubricants and Oils

## Typical Industries

- Mining
- Paints and Coatings
- Ceramics
- Pulp and Paper
- Electroplating & Anodizing
- Wastewater
- Marine
- Chemical Manufacturing & Distribution
- OEM's

**FTA Pumps**

27027 Westheimer Pkwy, Katy, TX  
Tel: 713 344 1226



## Construction

Wetted Materials: Polypropylene and PVDF

Diaphragm Materials: Neoprene, Santoprene™  
EPDM, PTFE, Buna, Hytrel®

Air Valve: Polypropylene

Ball Materials: Neoprene, Buna, EPDM, FKM,  
Santoprene™, PTFE

Seat Materials: Buna, Neoprene, EPDM, FKM,  
Santoprene™

O-ring Materials: Neoprene, Buna, EPDM, FKM,  
PTFE, FEP/FKM

Santoprene™ is a registered trademark of Exxon Mobil Corp.  
Hytrel® is a registered trademark of Dupont™

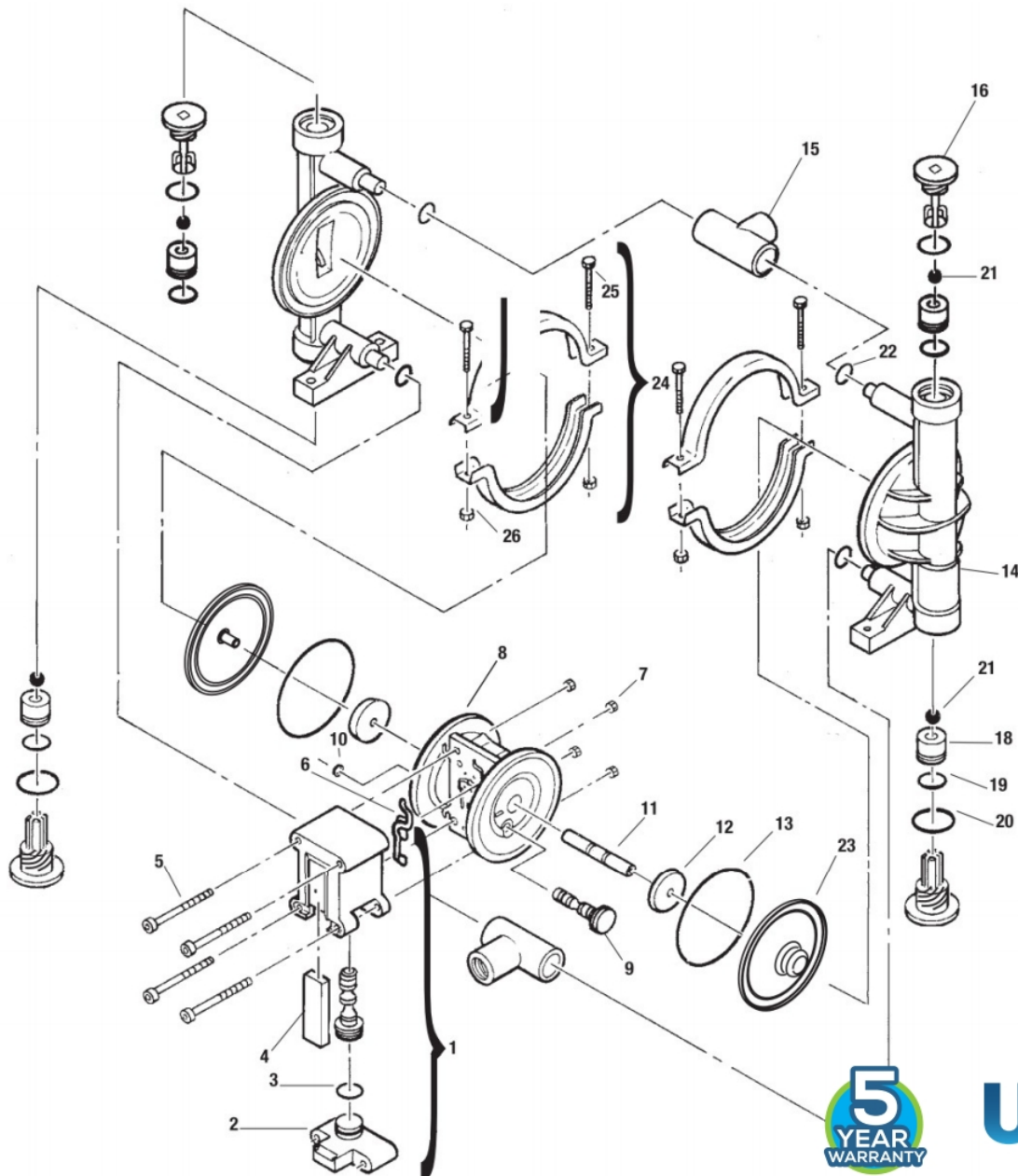
# THE RIGHT CHOICE

## Dimensions

Maximum Height: 6.40 in (145.00 mm)

Maximum Width: 5.70 in (145.00 mm)

Maximum Depth: 2.50 in (64.00 mm)



**USA**

**FTA Pumps**

27027 Westheimer Pkwy, Katy, TX  
Tel: 713 344 1226

